

# 600KG TELESCOPIC HYDRAULIC TRANSMISSION JACK





**Disclaimer:**

*The information in this document is to the best of our knowledge true and accurate, but all recommendations or suggestions are made without guarantee. Since the conditions of use are beyond their control, Tundra Industrial ® disclaim any liability for loss or damage suffered from the use of this data or suggestions. Tundra Industrial ® reserve the right to change product specifications and warranty statements without further notification. All images are for illustration purposes only.*

## 1. SAFETY GUIDELINES

**WARNING:** Ensure all preliminary checks are carefully carried out before use of jack. Immediately repair or replace damaged parts. Ensure that only Tundra Industrial genuine parts are used for any repair. Unauthorised parts may be dangerous and will invalidate the warranty. Contact your Tundra Industrial dealer for advice before repairing or replacing any parts.

Use the jack on level and solid ground, preferably concrete. Ensure the floor over which the jack will be transported is swept clean and clear of grease and obstructions.

Do not use on tarmac or any other soft surface as jack may sink or topple. Serious personal or fatal injury may result.

**DANGER:** If the jack tips or leans stop what you are doing immediately. Move quickly to a safe distance. Do not try to hold or steady jack.

- Use the jack in a suitable work area, keep area clean and tidy and free from unrelated materials. Ensure there is adequate lighting.
- Before use ensure the gearbox weight and size does not exceed the capacity of the jack.
- Ensure the vehicle is raised and stabilised at the correct height before attempting to move the jack under the vehicle.
- Keep all unauthorised persons away from the jack during lifting and lowering and when in transit.
- Maintain correct balance and footing. Ensure the floor is not slippery and wear non-slip shoes.
- Remove ill fitting clothing. Remove ties, watches, rings and other loose jewellery. Contain and/or tie back long hair.
- Ensure that the load is placed level and centrally on jack saddle and load is fixed in place before attempting to lift, lower, or transport.
- The lowering speed will vary according to the weight of the load and the release valve setting.
- Ensure the jack saddle is fully lowered and is clean, dry and oil free before attempting to move the jack with or without a load.
- Diligence is required in ensuring that you continually monitor any operation until completed.
- Do not operate jack if any parts are damaged or missing.
- Do not exceed the rated capacity of the jack.
- Do not allow untrained persons to operate the jack.
- Do not place any part of your body within or under the jack during use.
- Do not raise or lower vehicle lifting platform whilst the transmission jack is being used.
- Do not transport the jack, with or without a load, with the saddle in the raised position.
- Do not get jack wet or use in damp or wet locations or areas where there is condensation.
- Do not operate the jack when you are tired or under the influence of alcohol, drugs or intoxicating medication.
- Do not lift or support vehicles with jack and do not use jack as a load sustaining device.
- Do not use jack for any purpose other than removal, transportation and installation of transmissions.
- Do not move jack without suitable restraint on the load.
- Do not make any modifications to the jack, and do not adjust or tamper with safety valve.
- Do not remove any labels from the jack. If labels are damaged or unclear, replace them.
- Do not use brake fluid to top up hydraulic unit. Use hydraulic oil only.
- Ensure that you employ a qualified person to lubricate and maintain the jack.
- Before storing in safe area, ensure all parts are clean, free of grease and oil (especially the saddle).
- Lower saddle to the lowest position before storage.



### **WARNING:**

No responsibility is accepted for incorrect use of this equipment. Incorrect use can result in damage to the equipment and danger to the user. Warranty will be void in the event of incorrect use. The warnings, cautions and instructions discussed in this instruction manual cannot cover all possible conditions and situations that may occur. It must be understood by the operator that common sense and caution are factors which cannot be built into this product, but must be supplied by the operator.

## 2. DESCRIPTION

- Heavy-duty construction for durability and suitable for general workshop applications
- Two-way hydraulic unit ensures that the saddle lowers at a controlled speed at all times, even without load
- Spring-loaded dead man's safety release control reduces the risk of accidental lowering
- Extra large castors allow for smooth-rolling operation on garage floors
- Compatible with 500kg adjustable gearbox supports
- **Lifting Range: 1135- 1980mm**

## 3. SPECIFICATIONS

- Rated capacity: 600kg
- Ram extensions: 1
- Minimum saddle height: 1135mm
- Maximum saddle height: 1980mm
- Base size: 560 x 570mm
- NW: 34kg / GW: 37kg

## 4. ASSEMBLY

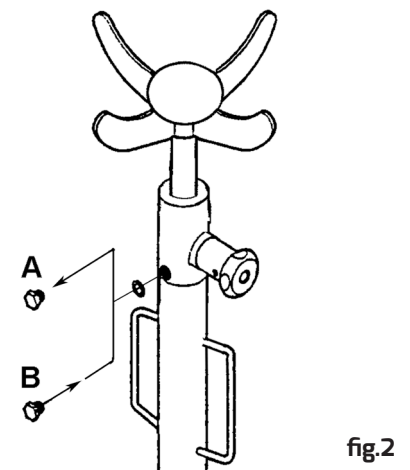
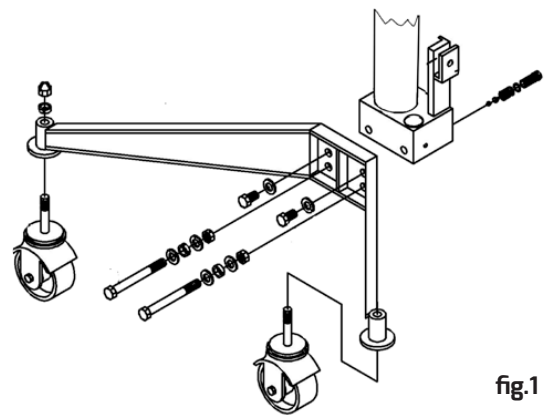
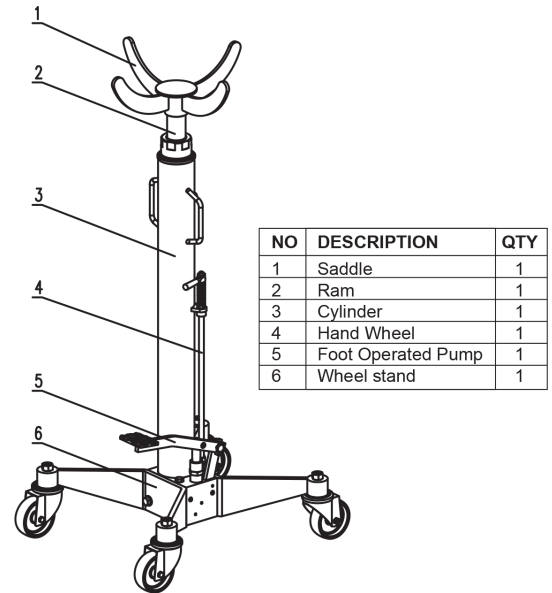
1. Unpack the product and check contents, contact your Tundra Industrial supplier if you find any damaged or missing parts
2. Assemble the wheels as shown in (fig.1) refer to the exploded parts diagram for guidance.
3. Screw the legs to the base of the stand and check that the stand is completely vertical before tightening the leg screws.
4. Place the saddle on the end of the central stand.
5. Remove the transportation oil plug and replace with the operating plug (identified by a hole in the plug head shown in fig.2)

## 5. BEFORE EACH USE

**IMPORTANT:** Before each use, it essential that you check the jack is in sound working order. Use following list to form an habitual pre-check procedure. Check items are not: damaged, broken, cracked, bent, malfunctioning, distorted, worn, loose, leaking, dirty, noisy or missing. Check for damage to any welded parts. Check each of the following:

- |                                  |                         |
|----------------------------------|-------------------------|
| 1. Saddle base                   | 6. All seals            |
| 2. Piston rod                    | 7. Jack main frame      |
| 3. Cylinder/Hydraulic unit       | 8. Foot pumps           |
| 4. Stopper rings and cotter pins | 9. Swivel castor wheels |
| 5. All nuts and bolts            | 10. Transport handle    |

**Never use jack if any suspect part is found, or if believed to have been subjected to abnormal load or shock load.**



## 6. OPERATING INSTRUCTIONS

**IMPORTANT:** Before using the jack you need to purge air from the hydraulic circuit in order to eliminate any air, that may have accumulated in the system during transit, as follows:

1. Open the release valve by turning valve knob anti-clockwise.
2. Pump the jack pedal up and down approximately 15 to 20 times.
3. Turn the release valve clockwise to close the valve.

### 6.1 Safety:

**WARNING!** Before use ensure you have read, understood and apply the **Safety Guidelines** described on **Page 3** of this manual. Ensure you prepare vehicle correctly before attempting to use the Transmission Jack.

### 6.2 Positioning the jack & lifting the load:

- Before use ensure the transmission weight and size do not exceed the capacity of the jack.
- Ensure that the vehicle from which the gearbox is to be removed is correctly positioned, raised and locked on an appropriate lift system.
- Ensure that there are no other persons around or under the vehicle.
- Ensure saddle is in lowest position and use handle to transport and centrally position jack beneath the vehicle transmission.
- Hold the handles to steady the jack, operate the foot pedal and the saddle will rise (see **fig. 3**).
- When the saddle is just beneath the transmission re-adjust alignment if necessary to centralise the saddle.

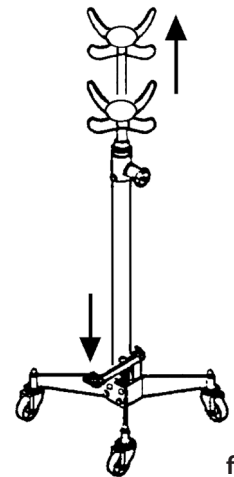


fig.3

### 6.3 Lowering the load:

**WARNING!** Ensure the load is central and stable on the jack saddle and load is fixed in place before attempting to lift, lower, or transport.

**Slowly** turn the release valve knob anti-clockwise (see **fig. 4**) to **gently** lower saddle to the lowest height before attempting to transport the load.

**IMPORTANT:** The unit is fitted with a dead man release valve. The quicker the valve knob is turned the more rapid the jack's descent will be. Ensure the jack's descent is slow and controlled to avoid the risk of sudden dropping which could be dangerous. The valve will automatically return to the closed position when the valve knob is released.

### 6.4. Transporting the load:

- Ensure the jack saddle is fully lowered and load is fixed in place before attempting to lift or transport.
- Transport the load over level and solid ground, preferably concrete, and ensure the floor is swept clean beforehand, ensure surface is free of moisture and grease and clear of obstructions.
- Be diligent in continually monitoring the load in transit. Keep all other persons at a safe distance.

**DANGER!** Do not use on tarmac, or any soft surface as jack may sink or topple. Serious or fatal injury may result. If jack tips or leans stop what you are doing and move quickly to a safe distance. Do not try to hold or steady the jack.

**Note:** This jack may be used with appropriate adaptors in order to handle such components as rear axle units and transfer cases that are within the weight limitations of the jack.

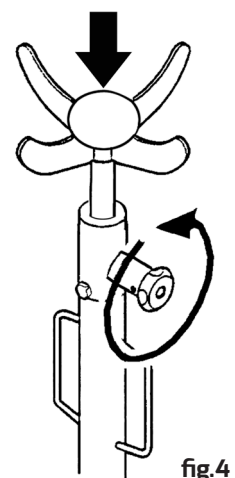


fig.4

### 6.5 RE-INSTALLING A GEARBOX:

To transport, reposition beneath a vehicle, and raise a load, reverse the procedures outlined above.

## 7. MAINTENANCE

**IMPORTANT:** Only fully qualified personnel should attempt maintenance or repair of this equipment.

- When the jack is not in use, the saddle must be in the lowest position to minimise ram and piston corrosion.
- Keep the jack clean and wipe off any oil or grease.
- Lubricate all moving parts with oil regularly.
- Note: The hydraulic ram is a sealed unit and must not be opened for any reason.
- Periodically check the pump piston and piston rod for signs of corrosion.
- Clean exposed areas with a clean oiled cloth.

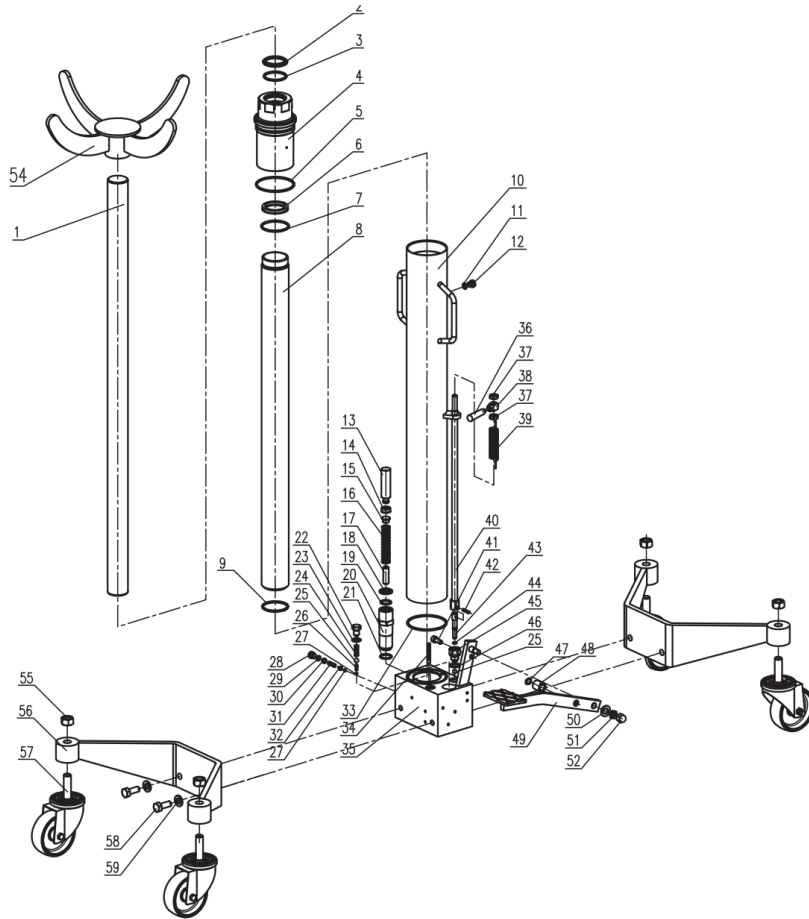
Do not use the jack if you believe it has been subjected to an abnormal load or shock.

For service advise please contact your Tundra Industrial supplier.

## 8. TROUBLESHOOTING

FAULT	CAUSE	SOLUTION
Jack will not lift	No hydraulic oil, or defective suction valve or delivery valve Release valve may be open	Contact your Tundra Industrial supplier Close the release valve.
Jack will only lift halfway	Hydraulic oil low, or excess of hydraulic oil	Contact your Tundra Industrial supplier
Raised load will not hold	Defective valves, or defective piston packing	Contact your Tundra Industrial supplier
Poor lifting	Defective plunger packing	Contact your Tundra Industrial supplier

### 9. PARTS LIST AND EXPLODED DIAGRAM



1	Piston rod	16	Spring cap	31	Spring	46	Washer
2	Dust ring	17	A limiting pin	32	Spring seat	47	Retaining ring 12
3	O ring	18	Dust ring	33	O ring	48	Foot roller
4	Top hat	19	O ring	34	Oil strainer	49	Foot
5	O ring	20	Pump body	35	Base	50	Washer
6	Y ring	21	O ring	36	handle tube	51	Lock nut 10
7	O ring	22	Restructuring of screw	37	Nut	52	Cap nut 10
8	Oil cylinder	23	Sealing washer	38	Handle head	53	Screw
9	O ring	24	Spring	39	Torsion spring	54	bracket component
10	Loose coat	25	Steel ball 9.0	40	Oil return valve rod	55	nut 16
11	O ring 8.5X2.65	26	Spring	41	Screw 8X20	56	Chassis
12	Screw	27	Steel ball 6.0	42	Cylindrical pin 5X20	57	Universal wheel
13	The pump core	28	Screw	43	Oil return valve	58	Bolt 12x25
14	Y ring	29	O ring 8X1.8	44	O ring 5.7X1.9	59	Flat gasket 12
15	Spring cap	30	Screw	45	Screw set		

## LIMITED WARRANTY STATEMENT

Tundra Industrial warrants its customers that its products will be free of defects in workmanship or material.

Tundra Industrial shall, upon suitable notification, correct any defects, by repair or replacement, of any parts or components of this product that are determined by Tundra Industrial to be faulty or defective.

This warranty is void if the equipment has been subjected to improper installation, storage, alteration, abnormal operations, improper care, unauthorised service or repair.

### Warranty Period

Tundra Industrial will assume both the parts and labour expense of correcting defects during the stated warranty periods below. All warranty periods start from the date of purchase from an authorised Tundra Industrial dealer. If proof of purchase is not available from the end user, then the date of purchase will be deemed to be 3 months after the initial sale to the distributor.

1 Year

- TUNJKTRANO.6 - 600KG Telescopic Hydraulic Transmission Jack

90 Days

- All replacement parts purchased outside of the warranty period

**Important:** All parts used in the repair or replacement of warranty covered equipment will be subject to a minimum of 90 days cover or the remaining duration of the warranty period from the original date of purchase.

### Warranty Registration / Activation

You can register and activate your warranty by visiting the Jefferson Tools website using the following address: [www.jeffersonstools.com/warranty](http://www.jeffersonstools.com/warranty) and completing the online form. Online warranty registration is recommended as it eliminates the need to provide proof of purchase should a warranty claim be necessary.

### Warranty Repair

Should Tundra Industrial confirm the existence of any defect covered by this warranty the defect will be corrected by repair or replacement at an authorized Tundra Industrial dealer or repair centre.

### Packaging & Freight Costs

The customer is responsible for the packaging of the equipment and making it ready for collection. Tundra Industrial will arrange collection and transportation of any equipment returned under warranty. Upon inspection of the equipment, if no defect can be found or the equipment is not covered under the terms of the Tundra Industrial warranty, the customer will be liable for any labour and return transportation costs incurred. These costs will be agreed with the customer before the equipment is returned.

### Warranty Limitations

Tundra Industrial will not accept responsibility or liability for repairs made by unauthorised technicians or engineers. Tundra Industrial's liability under this warranty will not exceed the cost of correcting the defect of the Tundra Industrial products. Tundra Industrial will not be liable for incidental or consequential damages (such as loss of business or hire of substitute equipment etc..) caused by the defect or the time involved to correct the defect. This written warranty is the only express warranty provided by Tundra Industrial with respect to its products.

Any warranties of merchantability are limited to the duration of this limited warranty for the equipment involved. Tundra Industrial is not responsible for cable wear due to flexing and abrasion. The end user is responsible for routine inspection of cables for possible wear and to correct any issues prior to cable failure.



## Claiming Warranty Coverage

The end user must contact Tundra Industrial (Tel: **+44 (0) 1244 646 048**) or their nearest authorised Tundra Industrial dealer where final determination of the warranty coverage can be ascertained.

### Step 1 - Reporting the Defect

#### *Online Method:*

- Visit the website [www.jeffersonstools.com/warranty](http://www.jeffersonstools.com/warranty) and complete the Warranty Returns form. You can complete the form online and submit it to us directly or download the form to print out and return by post.

#### *Telephone Method:*

Contact your Tundra Industrial dealer or sales representative with the following information:

- Model number
- Serial number (usually located on the specification plate)
- Date of purchase

A Warranty Returns form will be sent to you for completion and return by post or fax, together with details of your nearest authorised Tundra Industrial repair centre. On receipt of this form Tundra Industrial will arrange to collect the equipment from you at the earliest convenience.

### Step 2 - Returning the Equipment

It is the customer's responsibility to ensure that the equipment is appropriately and securely packaged for collection. Please ensure that you include a copy of your proof of purchase. Please note that Tundra Industrial cannot assume any responsibility for any damage incurred to equipment during transit. Any claims against a third party courier will be dealt with under the terms & conditions of their road haulage association directives.

### Step 3 - Assessment and Repair

On receipt, the equipment will be assessed by an authorised Tundra Industrial engineer and it will be determined if the equipment is defective and in need of repair and any repairs needed are covered by the warranty policy. In order to qualify for warranty cover all equipment presented must have been used, serviced and maintained as instructed in the user manual.

Where repair is not covered by the warranty a quotation for repair, labour costs and return delivery will be sent to the customer (normally within 7 working days). **Note:** If the repair quotation is not accepted Tundra Industrial will invoice 1 hour labour time at £30 per hour plus return carriage costs (plus VAT).

In cases where no fault can be found with the equipment, or, if incorrect operation of the equipment is identified as the cause of the problem, a minimum of 1 hour labour at £30 per hour plus carriage costs will be required before the equipment will be despatched back to the customer.

Any equipment repaired or replaced under warranty will normally be ready for shipment back to the customer within 7 working days upon receipt of the equipment at an authorised Tundra Industrial Repair centre (subject to part availability). Where parts are not immediately available Tundra Industrial will contact you with a revised date for completion of the repair.

### General Warranty Enquiries

For any further information relating to Tundra Industrial warranty cover please call **+44 (0) 1244 646 048**.

## EC DECLARATION OF CONFORMITY

We, Tundra Industrial, as the authorised European Community representative of the manufacturer, declare that the following equipment conforms to the requirements of the following Directives:

**EN 1494:2000+A1:2008 (as amended)**

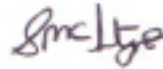
Mobile or movable jacks and associated lifting equipment

**2006/42/EC (as amended)**

Machinery Directive

**Equipment Category:** Jack / Lifting Equipment  
**Product Name/Model:** TUNJKTRANO.6 - 600KG Telescopic Hydraulic Transmission Jack  
**Maximum Load:** 600KG

**Signed by:** Stephen McIntyre  
**Position in the company:** Operations Director  
**Date:** 30 March 2017  
**This technical document is held by:** Jimmy Hemphill



Technical file holder's address as shown below

### Name and address of manufacturer or authorised representative:

Tundra Industrial,  
Herons Way,  
Chester Business Park,  
Chester,  
United Kingdom,  
CH4 9QR

Telephone: **+44 (0)1244 646 048**  
Fax: **+44 (0)1244 241 1**



